

General Price List



HARRELL®



Where Love Lives On®

Austin

4435 Frontier Trail
Austin, TX 78745
(512) 443-1366

Dripping Springs

100 Heritage Drive
Austin, TX 78737
(512) 382-6543

Kyle

1715 Kirby
Kyle, TX 78640
(512) 268-8200

Kingsland

145 Texas Avenue
Kingsland, TX 78639
(325) 388-0008

Llano

307 E. Sandstone St
Llano, TX 78643
(325) 247-4300

These prices are effective as of August 13, 2025 but are subject to change without notice.



Zac, Christy, Jason, and Caleb Harrell

MISSION

Lead with Love, Serve With Honor, Guide with Light

VISION

Make Every Day Exceptional

Many of our customers compliment us for our graciousness, accessibility, ability to accommodate requests, gifting to work seamlessly as a team, and genuine love for all who enter our home. Our interaction with each family extends beyond professionalism, trust, and integrity. We want you to feel proud of the services we provide because they bless you and touch your family and friends.

“ Harrell's Funeral Home was extremely professional and kind. My husband was cremated and we also had a prior viewing service. Everyone was so attentive. The facility is very clean. They treat you like they would treat their own family. I loved my experience. They also offer a after passing service that ensures your taking the correct financial steps which was so helpful. I recommend them to anyone who wants and expects excellent customer service.
Tracy Clary ”

“ We were so impressed with Harrell Funeral Home! They are not your run-of- the-mill Funeral Home, but very elegant and high quality. We were worried that they wouldn't be able to deal with Hispanic traditions, but they were very accommodating to whatever we wanted. We felt very important, and listened to! Also, the Aftercare was so beneficial, and gave me SO much peace of mind! I have been losing sleep over who I need to contact, and what I should be doing next, but Carol answered all of my questions, and now I don't have to worry anymore!
Eva ”

Why Choose Harrell Funeral Home

- Largest Family-owned Funeral Home in Central Texas
- Recognized Community Leader:
 - Community Choice Awards Winner in Austin for Best of the Best in Funeral/Cremation Services (2021, 2022, 2023, 2024)
 - Locals Love Us Award Winner in Kingsland for Best Funeral Home in Kingsland (2021, 2022, 2023, 2024)
 - Community Awards Winner for Best of Llano County- Best Funeral Home & Services (2023, 2024)
 - Only top 1% in Texas are invited to be a Member of Selected Independent Funeral Homes.
- Provide an extra level of care: Tribute Video, Professional Help wrapping Up Estate/Notifications, Complimentary Counseling Session/Grief Support, Holiday Remembrance Services.

WE ARE LOCAL

Highly Trained Professional Staff

We know what to do and will shine a light on the path to make it easier for you. Many of our staff have 20+ years of experience guiding families.

Multiple Locations for your Convenience

You will feel at home in our newly remodeled facilities which are light and comfortable. We have locations in Austin, Dripping Springs, Kyle, Kingsland*, and Llano*. *Remodel updates planned in the near future.

Cremation + Burial Services for All Budgets

Let us help you honor your loved one in an unforgettable way. We have unique service options for all budgets and offer the latest technological advances in the funeral industry, including digital tribute videos, keepsake books, livestreaming, a planning center, fingerprint keepsakes, solidified cremated remains, and more.

Unique + Meaningful Services

We have many services to complement your choice of burial or cremation. Services include religious/spiritual services, memorial services, life celebrations, catered receptions, military honors, and green burials.

Help you Settle Personal Estate Matters after the funeral

We ensure the process doesn't drag out longer than needed, verify you aren't missing out on benefits, and help protect you from fraud.

Why being a Family-Owned Funeral Home Matters

- More choices, affordable prices, and personalized care.
- We can spend as much time as needed with your family and ensure you are cared for in an exceptional way.
- You will feel like you're a member of our family and not like a commodity.
- Austin has a 14% higher presence of Corporate-owned funeral homes than the National average. Corporate-owned firms around town include: Cook-Walden (5 locations), Weed-Corley-Fish (4 locations), Neptune, Condra (Taylor), Clements-Wilcox (Marble Falls), Fuller-Sheffield (Austin). Beck (3 locations), All-Faith (2 locations)



Patsy and Jason Harrell
Co-Partners

BURIAL & CREMATION SERVICE OFFERINGS

Harrell Funeral Home offers various burial options that customers can personalize for their families. We feel a funeral represents an opportunity for family and friends to reflect on the life of their loved one and to honor the memory of their life. Funerals provide a time for sharing in its deepest sense. We want to serve you by creating an environment that makes this walk easier. We will meet with your family to discuss which service options best meet your needs (whether burial or cremation) and where you would like to hold services (our chapel, a local church, graveside, or other facilities). Our staff is here to assist your family in meaningful ways:

- Receiving flowers that are sent to the funeral home, church, or another facility
- Compiling the flower cards to assist you later in writing acknowledgements
- Preparing a summary for clergy, listing various details that pertain to the deceased and survivors as well as the ceremony
- Arriving an hour early and attractively displaying the flowers following religious customs and clergy preferences
- Bringing, displaying, or caring for the cremated remains as desired
- Reserving and assisting with seating, setting up memorial registers for signatures, and delivering printed materials to guests
- Greeting guests as they enter and guiding them as needed
- Providing easels for the family to display select photos or memorabilia during the ceremony
- Coordinating with musicians and clergy and preparing honorarium checks
- Assisting in the playing of prerecorded music during the ceremony
- During the closing of the ceremony: ushering the survivors and others, transferring and displaying flowers, display boards, and mementos to the reception or as you otherwise direct us

Why Funeral and Memorial Services are important:

- Assist in the first steps in the grief process by reinforcing the reality of death
- Create a place, time, and space dedicated to celebrating a life lived in a personal way and staying focused during an emotional time
- Offer families an occasion to say a final goodbye
- Offer an opportunity to express the feelings of grief
- Provide an opportunity to share memories that validate the life of the deceased
- Provide support to friends/family in a structured manner to acknowledge the loss within the family and community
- The therapeutic act that begins the process of healing



CREMATION SERVICE OFFERINGS

Community Gathering \$6,580

Personalized services with special details to honor your loved one, including funeral and visitation services to allow family and friends to pay their respects.

The Community Gathering offering provides a comprehensive and meaningful tribute for families who want a complete memorial experience. This offering includes a funeral service at our chapel, your church, or another venue of your choice; and a visitation at our facility where friends and extended family can pay their respects. A personalized remembrance video will be featured during the service, offering a deeply personal touch. This offering is ideal for those who wish to gather with loved ones, share memories, and celebrate the life of their loved one in a thoughtful, well-coordinated manner. Your family will also have a private opportunity to say goodbye before the visitation begins. Following the service, cremation will take place at our onsite crematory, where your loved one will always remain in our care.

Friends & Family Goodbye \$5,320

A memorial service for family and friends to share memories and show their support.

The Family & Friends Goodbye offering is ideal for families who wish to bring together loved ones and friends for a more traditional memorial without the decedent present. This offering includes a funeral service, either in our chapel, your church, or another venue of your choice. A remembrance video will also be created to capture the essence of your loved one's life and will be played during the service and featured on their obituary. Following the service, cremation will take place at our onsite crematory, where your loved one will always remain in our care.

Private Family Goodbye \$4,880

A peaceful space for family to privately say goodbye.

The Private Family Goodbye provides an intimate, one-hour gathering in a quiet setting for family members to honor and bid farewell to a loved one. This simple yet meaningful opportunity for closure is perfect for families who prefer a private, personal farewell without the formality of a larger service. The gathering will take place in a dedicated room, designed to offer peace and reflection during this important time. The Private Family Goodbye gatherings are scheduled during the week (Monday-Friday) between the hours of 9:00 a.m. and 4:00 p.m.

Basic Cremation \$3,150

A simple, no-frills cremation process.

The Basic Cremation package is a straightforward and economical option for families who do not require any additional services. This package includes the cremation of your loved one at our onsite crematory. The process is handled with the utmost care, ensuring your loved one remains in our custody throughout, from the time of transfer until the cremation is complete. This option is ideal for those seeking a direct cremation without a service or formal gathering. Viewing of your loved one is not available with this option.

CREMATION & BURIAL SERVICES

COMPLIMENTARY SERVICES
(INCLUDED WITH ALL PACKAGES)

- ✓ **Unlimited Access to the Harrell Team** - compassionate care and guidance anytime
- ✓ **Online Obituary Tribute** - a place to share stories, photos, and memories
- ✓ **Aftercare Partners** - resources to support you after the service

SERVICES	COMMUNITY GATHERING \$6,580	FRIENDS & FAMILY GOODBYE \$5,320	PRIVATE FAMILY GOODBYE \$4,880	BASIC CREMATION \$3,150	BURIAL \$6,975
BASIC SERVICES WITH FUNERAL DIRECTOR & STAFF	✓	✓	✓	✓	✓
TRANSFER OF LOVED ONE INTO OUR CARE INTO OUR TEMPERATURE-CONTROLLED ENVIRONMENT	✓	✓	✓	✓	✓
PREPARATION OF YOUR LOVED ONE (DRESSING, COSMETICS, PREP FOR VIEWING)	✓		✓		✓
PRIVATE GOODBYE VIEWING	✓		✓		✓
EMBALMING	✓				✓
VISITATION AT OUR FACILITIES	✓				✓
FUNERAL SERVICE IN OUR CHAPEL, YOUR CHURCH, OR OTHER FACILITY	✓	✓			✓
FLOWER & EQUIPMENT VEHICLE (ADDITIONAL MILEAGE MAY APPLY)	✓	✓			✓
CREMATION IN OUR CREMATORY	✓	✓	✓	✓	
COORDINATION WITH CHURCH, CLERGY, CEMETERY, FLORIST, NEWSPAPER	✓	✓			✓
TRIBUTE VIDEO (VALUE \$200 PROVIDED AS A COMPLIMENTARY SERVICE)	✓	✓			✓
LIVE STREAMING (VALUE \$200 PROVIDED AS A COMPLIMENTARY SERVICE)	✓	✓			✓

ADD-ON SERVICES

- ✓ **Death Certificates** - \$20 for first / \$3 each additional
- ✓ **Urn, Casket & Vault Selection** - wide range of styles and prices available
- ✓ **Ceremonial Casket** - for viewing or service purposes
- ✓ **Memorial Stationery & Memorial Portraits** - custom designed for your loved one
- ✓ **Flowers** - fresh arrangements in your preferred style and color
- ✓ **Monuments** - personalized headstones and markers
- ✓ **Crementation Containers** - for care and dignity during cremation
- ✓ **Witness Cremation** - if you wish to be present during the cremation process

The services listed above do not include an urn, certified copies of the death certificate, casket or alternative container (unless specifically noted), hearse transportation for church services, memorial book packages, or fees for autopsy repair.

BURIAL SERVICE OFFERINGS

Celebration of Life Funeral Service

\$6,975

The Celebration of Life service truly reflects the uniqueness of the life it honors and can be customized to reflect their life. Services can be traditional or modern and take place at the funeral home, a place of worship, a graveside, or other community venues. Our Funeral Directors will guide you through selecting the type of services that will make this service unique to your family.

Before the service, a viewing and visitation may be held to allow everyone time to remember your loved one's endearing qualities. Then, during the service, we offer many ways to personalize the service for your family: readings, videos, speakers, and religious leaders can help create special intimate moments. Families of veterans can also include military honors during the ceremony or hold graveside services at a National Veterans Cemetery.

After the service, an interment or committal service can be held at the cemetery. A committal service allows family and friends to gather at the graveside to honor their loved one and say final farewells. These services can take place outdoors, inside a mausoleum, or in lieu of a chapel or church service. Families also have many opportunities to personalize both the graveside ceremony and the gravesite itself.

The following are included in our fees.

- Basic services with Funeral Director and Staff
- Transfer of loved one into our care
- Arrangement conference with immediate family members and Funeral Director
- Coordination between clergy, church, cemetery, florist, newspaper, etc.
- Professional embalming, dressing, cosmetics, and other preparations of the body for viewing
- Viewing/Visitation/Rosary at our facility
- Funeral service in our chapel, a church, graveside, or at a community venue
- Committal service at the gravesite or cemetery
- Funeral hearse or funeral vehicle for transportation
- Utility car to transport flowers and other items
- Online obituary tribute and social media sharing from our website
- Aftercare service with an Aftercare Partners Director to help wrap up estate issues and notification

Our Gift to You

On behalf of Harrell Funeral Home, please accept my deepest condolences. Losing a loved one is overwhelming, but you are not alone—we are here to support you.

Our Aftercare Counselor will reach out soon to offer guidance and assistance, making this process as simple and stress-free as possible. Let us handle the details so you can focus on healing and remembering your loved one.

-Jason Harrell



Handling Important Affairs & Benefits

We provide assistance with Social Security, Veterans benefits, estate matters, and financial accounts. Our team ensures you aren't missing out on any benefits you may be entitled to.

Organizing & Moving Support

Help declutter, downsize, and transition into a new living space.

Protecting Your Loved One's Legacy

We help prevent fraud, stop unwanted mail, close accounts with care, and cancel subscriptions or memberships to ensure all recurring obligations are handled smoothly.

Counseling & Emotional Support

Virtual grief counseling and personal assistance tailored to your family's needs.

Harrell Funeral Home is the Only Funeral Home Providing Aftercare Partners in the Austin and Highland Lakes Area.

Peace of Mind, Miles Away

"As an out-of-state sibling, I was worried about managing my parents' estate transition. Aftercare partners kept me informed every step of the way and made a complicated process feel simple and manageable."

-David Kim

Healing Through Professional Care

"I was so grateful for their support after my husband passed. They coordinated everything—from legal paperwork to selling our family home—with such sensitivity and professionalism."

-Margaret Williams

Turning Complexity into Clarity

"I dreaded the process of managing my father's estate, but aftercare partners made everything manageable. Their network of professionals was incredible, and I never felt alone during the entire journey."

-Michael Rodriguez

OUR CARE TEAM



Brad Masters
Founder



Cindy DeLeon
Family Advisor



Michele Miranda
Family Advisor

OUR APPROACH TO SUPPORTING YOU

Aftercare Partners™ is an extension of Harrell Funeral Home's dedication to compassionate care. Every family's journey is unique, and we provide personalized support that meets both practical and emotional needs. We are more than coordinators—we are dedicated partners committed to lightening your load. By connecting families with a network of trusted professionals and offering services at discounted rates*, we make difficult transitions more manageable, so you can focus on healing and remembrance.

HOW WE CAN HELP

- ✓ **Save Time & Stress:** What takes most families weeks, we can do in hours.
- ✓ **Notify Agencies:** Social Security, VA, banks, insurance, and more—we handle the tough conversations.
- ✓ **Protect You:** We help stop fraud, solicitor calls, and unwanted mail.
- ✓ **Ensure You Receive Benefits:** Many families miss out on support they are entitled to, we make sure you don't.



Estate & Financial Assistance:

- Help with wills, probate, and trust management*
- Guidance on pension plans, 401(k)s, IRAs, and annuities
- Assistance with life insurance claims and beneficiary updates



Government & Legal Support:

- Social Security and Veterans benefits processing
- Office of Personnel Management updates
- Property and vehicle title transfers



Protection & Peace of Mind:

- Fraud prevention and identity protection
- Stopping unwanted mail and solicitations
- Canceling subscriptions and memberships



Home & Lifestyle Transitions:

- Organizing, downsizing, and home decluttering*
- Assistance with moving/estate sales*
- Help with senior living transitions*



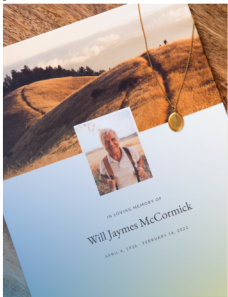
Emotional & Practical Guidance:

- Virtual grief counseling with licensed professionals*
- Personal support tailored to your family's needs

We're Here for You

If you have any questions or need more information about our Aftercare Partners, please don't hesitate to reach out to your funeral director. We're honored to walk alongside you during this time and are here to help in any way we can.

Customize Your Service



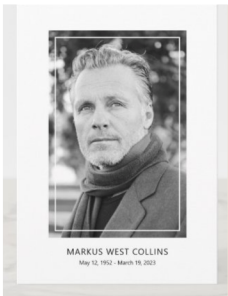
Tribute Book

A beautiful hardcover keepsake book that includes condolences, obituary, photos, service times, and sympathy gifts purchased.



Livestream Service

Livestream the service and post the recording on the obituary page for no additional cost. A digital copy of the recording is available.



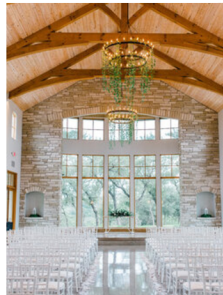
Memorial Stationary

Pick a design and we will personalize the memorial register book, program, and thank you cards to include photo's, obituary, and service details.



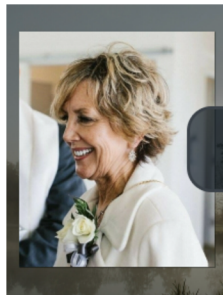
Parting Stones

A solid alternative to cremated remains. Solidified remains let you feel close and connected to your loved one in daily life. The average person is 40-60 stones.



Off-site Locations

Want to have your memorial service at another location? Ask about the relationships Harrell has in the community to host a variety of gatherings.



Tribute video

Provide a personal backdrop and special meaning to your family's memorial service. The video will serve as a treasured keepsake.



Catering

Each of our locations has a reception area for your convenience and catering services that we highly recommend.



Fingerprint Jewelry

The jewelry options can hold cremated remains, feature a loved one's photo, fingerprint, or personal handwriting.

Itemized Services

The goods and services shown below are those we can provide to our customers. You may choose only the items you desire. However, any funeral arrangements you select will include a charge for our basic services and overhead. If legal or other requirements mean you must buy any items you did not specifically ask for, we will explain the reason in writing on the statement we provide describing the funeral goods and services you selected. Please note that there may be charges for items such as cemetery or crematory fees, flowers, and newspaper notices.

Services of Funeral Director and Staff

Basic Services of Funeral Director and Staff

\$2,920

This fee for our basic services and overhead will be added to the total cost of the funeral arrangements you select. This fee is already included in our charges for direct cremations, immediate burials, and forwarding or receiving remains. Basic Service Fee includes but not limited to Licensed Funeral Directors and Qualified Personnel; Personnel available 24 hours a day, 365 days a year to respond to your needs; Compliance with all Federal, State, and Local Funeral Regulations; Arrangement interview and coordination of arrangements; Bookkeeping, accounting fee, and general clerical administration; Securing and recording the death certificate and disposition permit, as necessary; Coordination of arrangement plans with cemetery, crematory, and/or other parties involved in the final disposition, and a proportionate share of our basic overhead cost.

Preparation of Remains

Embalming

\$940

Except in certain special cases, embalming is not required by law. Embalming may be necessary, however, if you select certain funeral arrangements, such as a funeral with viewing. If you do not want embalming, you usually have the right to choose an arrangement that does not require you to pay for it, such as direct cremation or immediate burial. Embalming is a chemical process, which provides temporary preservation of the body and eliminates health hazards. A person licensed by the State must perform this procedure. The Texas Department of Health states: "No human body may be held in any place or be in transit for more than 24 hours after death and pending final disposition unless either maintained at a temperature with the range of 34-40 degrees Fahrenheit, or is embalmed by a licensed embalmer in a manner approved by the Texas Funeral Service Commission, or by an embalmer licensed to practice in the state where the death occurred, or is encased in a container which ensures against seepage of fluid and escape of offensive odors." If there will be a public viewing of the deceased, it is the policy of Harrell Funeral Home to embalm the body. You may decline these services by either making other arrangements or selecting other services.

Refrigeration

\$470

It is the policy of our firm to require refrigeration of an unembalmed body after 24 hours. An additional fee of \$25 per day after the 5th day.

Other Preparation

Additional care of embalmed or unembalmed remains included but not limited to the following: Restoration, cosmetology, hair care, washing, disinfecting, manicuring, and dressing

\$395

Special care of autopsied remains and/or after organ donation

\$325

Transportation

Transfer of remains to funeral home

\$740

Transfer of remains to place of Autopsy

\$695

Use of hearse or funeral vehicle for transportation to place of disposition or other facility

\$495

Funeral Sedan (Lead/Clergy)

\$250

Use of car for permits and/or flowers

\$250

Transfer to or from airport, crematory, or other location

\$325

Overnight trip

\$200

Transportation in excess of 25 miles will be subject to an additional charge of

\$3.50 per mile

Facilities, Staff, and Equipment Use (Monday – Friday, 8 a.m. – 5 p.m.)

Funeral/Memorial Service conducted at the funeral home or another facility	\$840
Funeral/Memorial Service conducted at the funeral home or another facility (Without handling the care and disposition of the deceased) Services include coordinating the service arrangements, supervision of the service, and staff assistance.	\$1,680
Use of Equipment and Staff for Graveside Service (Monday-Friday, 8-5)	\$840
Services includes accompaniment of remains to cemetery, supervision of graveside service and staff assistance. Tent, chairs and open/close grave may be additional.	
Use of Equipment and Staff for Graveside Service for Cremated Remains	\$495
Services includes accompaniment of cremated remains to cemetery and staff supervision of graveside service. Tent, chairs and open/close grave may be additional.	
Reception room at funeral home, following funeral/memorial service (Three-hour max) (Monday-Friday, 8-5)	\$395
Reception room at funeral home, without funeral/memorial service (Three-hour max) (Monday-Friday, 8-5) Services include use of facilities for reception room, staff attendant, serving tables/linens. Catering is available at an additional cost.	\$795
Off-Site Reception fee	\$150
Reception attendant fee if catering is brought in by family	\$150
Exclusive use of facilities per day (in addition to other facility charges)	\$995
Visitation, Viewing, and/or Rosary conducted at the Funeral Home (per day)	\$395
Visitation, Viewing, and/or Rosary conducted at another Facility with two vehicles at \$250 each. Services include setup and use of visitation room, display of floral arrangements and staff assistance for visitation.	\$895
Use of Facilities for Tissue Recovery/Autopsy	\$395
A Private Goodbye – Viewing includes appropriate preparation of deceased, and a small private room for family only, up to one-hour, between the hours of 9AM – 4PM, Mon-Fri.	\$400
Additional charge for a Service or Visitation on Sunday or a Holiday (New Year’s Day, Memorial Day, July Fourth, Labor Day) We are Closed on Easter, Thanksgiving, Christmas Day- No Service or Visitation offered.	\$2,000
Additional charge for services after Business Hours (after 5:00p.m.)	\$200
Additional charge for a Service or Visitation on a Saturday	\$500
No services, visitations, or receptions will be scheduled on Sundays	
Audio/Video Fee – Staff Organist, Vocalist, or use of our Audio/Video System	\$100

Additional Services

Forwarding Remains to Another Funeral Home	\$2,390
The charge includes transfer of remains to funeral home within 25 miles of our funeral home, basic services of Funeral Director and staff, a proportionate share of overhead cost, car for permits, and embalming. Charge doesn’t include visitation, ceremonies, transportation to airport/another funeral home, shipping container.	
Receiving Remains from Another Funeral Home	\$2,145
The charge includes basic services of Funeral Director and staff, a proportionate share of overhead cost, transportation of remains to cemetery or crematory. The charge does not include visitation, ceremonies, or transportation from airport or another funeral home.	
Medical School Donation	\$1,995
Basic Services, Removal of Remains, Embalming and Vehicle for Permits	
Disinterment	\$2,250
Prepare documents, secure permits and coordination of disinterment (open/close grave not included)	
Coordination of International Shipping	\$500
Storage of Remains (after 5 days)	\$25 per day

Merchandise

Caskets (Refer to merchandise price list)	\$1,095-\$3,895
Outer Burial Containers (Refer to merchandise price list)	\$1,195-\$6,695
Alternative Containers (Refer to merchandise price list)	\$245-\$1,595
Urns (Refer to merchandise price list)	\$99-\$785
Memorial Stationary Package	\$340
Memorial Portrait Package	\$199
Memorial Stationery- Planning a Memorial Service at a Later Date Option	\$275
A La Carte Stationary Pricing:	
• Personalized Linen Guest Book (includes \$49 design fee)	\$124
• Expedited One-Day Portrait (16x20) (\$199 Portrait + \$70 Shipping Fee)	\$269
• Additional 8x10 Memorial Portrait	\$140
• Programs (\$1.50 each + \$49 design fee)	\$1.50 each + \$49
• Thank You Cards (no design fee)	\$1.25 each
• Custom Prayer Cards (\$1.50 each + \$49 design fee)	\$1.50 each + \$49
• Tribute Book	\$100
• Laminated Bookmarks (Quantity of 4)	\$25
• Memorial Candle	\$25 each
Livestreaming	\$200
Personalized Casket Panel	as Selected
Personalized Casket Wrap	\$1,555-\$3,175
Crucifix	\$25 each
Rosary Beads	\$15 each
Flag Case	\$275
Disaster Pouch	\$95
Temporary Grave Marker	\$25
Temporary Cremated Remains Container	\$65
Tribute Video (Additional copies \$25 each)	\$200
Photo Scanning	\$200
Recording of Service	\$25
Flowers	as Selected
Catering	as Selected
Aftercare Partners	\$250
Parting Stones (includes fee for mailing cremated remains)	\$1,750
Legacy Touch Fingerprint Keepsakes and Jewelry	as Selected
Forever LT Jewelry	as Selected
Eterneva Diamonds	as Selected
Gel Pack (15 Quantity)	\$75

Direct Cremation Arrangements

Direct Cremation

\$3,150-\$6,945

Our charges for a direct cremation include transfer of remains to funeral home within 25 miles of our funeral home, basic services of Funeral Director and staff, a proportionate share of overhead cost, refrigeration and crematory fee. If you want to arrange a direct cremation, you can use an alternative container. Viewing of your loved one is not available with this option.

Alternative containers encase the body and can be made of materials like fiberboard or composition materials (with or without an outside covering). The container we provide is an Unfinished Wood and Fiber Box. The crematory used by our funeral home does not permit the use of alternative containers made of non-rigid materials.

- Direct cremation with unfinished wood and fiber box provided by our funeral home \$3,395
 - Direct cremation with casket selected from our funeral home (Casket price is additional) \$3,150
 - Direct cremation with container provided by purchaser \$3,150
- (All such containers must meet any applicable State or Crematory Requirements)*

Storage of Cremated Remains – Following One Week after Cremation

\$10 per day

Expedited Cremation Fee (In addition to the crematory fee)

\$250

Mailing of Cremated Remains via Priority Express Mail

\$250

Crematory Fee: Under 350lbs.

\$350

350 – 650lbs.

\$750

Witness of Cremation

\$175

Graveside Service for Cremated Remains

\$495

Service includes accompaniment of cremated remains to local cemetery and staff supervision of graveside service. Tent, chairs and open/close grave may be additional. This is an additional charge to any package.

Immediate Burial Arrangements

Immediate Burial (Cemetery Fee Not Included)	\$4,625-\$8,420
Our charges for an immediate burial include transfer of remains to funeral home within 25 miles of our funeral home, basic services of Funeral Director and staff, a proportionate share of overhead cost, refrigeration, and transportation to cemetery within 25 miles of our funeral home. (Without any Rites or Ceremonies at funeral home, graveside, or elsewhere)	
• Immediate burial with unfinished wood and fiber box provided by our funeral home	\$4,870
• Immediate burial with casket selected from our funeral home (Casket price will be additional)	\$4,625
• Immediate burial with container provided by purchaser (All such containers must meet any applicable requirements)	\$4,625
Death Date engraved on Granite Headstone	\$250
Installation of Veterans Granite Headstone	\$175

Payment Policy

Payment for our goods, professional services, and cash advancements is expected in full at the time of the funeral arrangements. For your convenience, we accept cash, personal checks, all major credit cards (**VISA, MasterCard, American Express, and Discover**), and verified life insurance policy assignments. If a credit card is used for payment, there will be a 2.5% surcharge to the customer. In addition, if a life insurance policy is being used as a method of payment then there will be a 3.9% fee applied. Being a small business and the uncertainty regarding estate payments, we are not able to file against estates for payment of our fees.

Funeral Financing

Harrell Funeral Home partners with LendingUSA to provide families a resource for funding funeral expenses. We believe every family deserves the opportunity to give their loved one a meaningful funeral. LendingUSA provides flexible monthly payments and families can check their monthly payment without hurting their credit score. Financing requires a minimum of 620 FICO credit score. The approval process can be completed in three simple steps from the funeral home or online from the comforts of home.

Cash Advance Items

This represents items that may need to be paid separately in advance. These items include but are not limited to:

- Cemetery Fee
- Death Certificates
- Newspaper Obituaries
- Flowers
- Police Escort
- Clergy Honorarium

Preplanning

We strongly believe it is important for families to plan their funerals and cremations in advance and consider various options without pressure or obligation. You have the option of locking in today's prices and funding your funeral plan or simply placing your wishes on file and allowing costs to be paid at the time of need. WE ACCEPT MOST PREPAID FUNERAL PLANS FROM OTHER FUNERAL HOMES.



WE ARE HERE FOR YOU

Please contact us about any of our services or meet with one of our funeral service professionals. A representative is available 24/7. You can also find information on our website, including a build-a-quote tool.

Austin

4435 Frontier Trail
Austin, TX 78745
(512) 443-1366

Kyle

1715 Kirby
Kyle, TX 78640
(512) 268-8200

Kingsland

145 Texas Avenue
Kingsland, TX
78639
(325) 388-0008

Dripping Springs

100 Heritage Drive
Austin, TX 78737
(512) 382-5643

Llano

307 E. Sandstone St
Llano, TX 78643
(325) 247-4300

HARRELL®



Where Love Lives On®